

# PALOMINO FIELDS PLAT - DIVISION IV

A REPLAT OF TRACTS 'B', 'C', AND 'D', PALOMINO FIELDS PLAT - DIVISION IV  
 A PORTION OF THE S 1/2 OF THE NW 1/4 OF SECTION 27, TOWNSHIP 18 NORTH, RANGE 18 EAST, W.M.  
 KITTITAS COUNTY, WASHINGTON

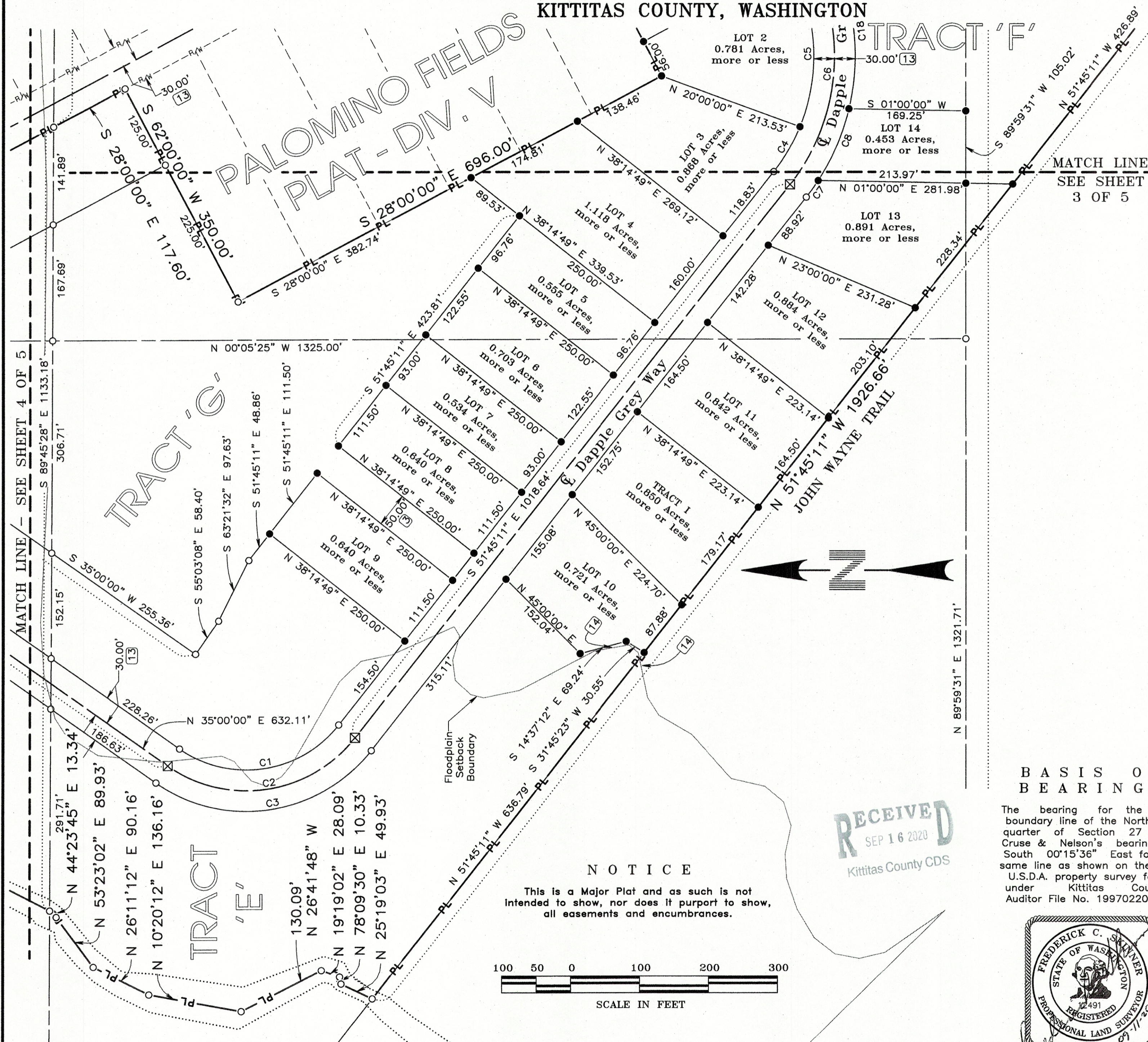
Receiving No. ....

LP - ##-####

181827

## LEGEND

- 5/8 - inch iron pin with surveyor's cap marked "LS 12491" monument set ..... 2020
- ⊙ 3 - inch brass cap monument found September, 2016
- 5/8 - inch aluminum surveyor's cap monument stamped 'Kittitas County' found September, 2016
- ⊠ 2 - inch brass cap monument stamped 'LS 12491' grouted in a 2-inch pipe set in a monument case ..... 2020
- △ 5/8 - inch iron pin with surveyor's cap stamped '12491' monument found September, 2016
- ▲ 5/8 - inch iron pin with surveyor's cap stamped '18092' monument found September, 2016
- ⊙ 5/8 - inch iron pin with no surveyor's cap monument found September, 2016
- 1 - inch iron pin with no surveyor's cap monument found September, 2016
- Railroad spike monument found September, 2016
- ▲ 5/8 - inch iron pin with surveyor's cap marked "LS 12491" monument' found ..... 2020
- Calculated point only  
- no monument found or set
- ( ) Previously recorded information from Preston Short Plat, Short Plat A-22, and shown on drawing as 'Kittitas Co. Short Plat No. 77-12', as found under Kittitas County's AFN 418140
- [ ] Previously recorded information from Record of Survey drawing as found under Kittitas County's AFN 199702200014
- < > Previously recorded information from Record of Survey drawing as found under Kittitas County's AFN 199702200014
- ] [ Previously recorded information from Record of Survey drawing as found under Kittitas County's AFN 199702200014
- { } Previously recorded information from Palomino Fields Plat - Div. II drawing as found under Kittitas County's AFN 201905210014
- > < Previously recorded information from Statutory Warranty Deed found under Kittitas County's AFN 416766
- # Note - See PLAT NOTES - Sheet 5 of 5

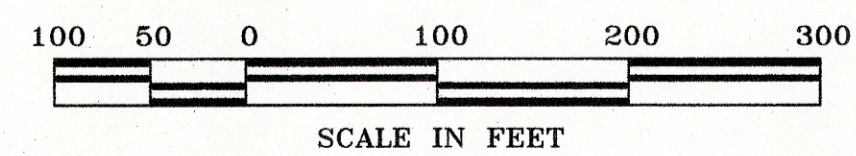


MATCH LINE  
SEE SHEET  
3 OF 5

MATCH LINE - SEE SHEET 4 OF 5

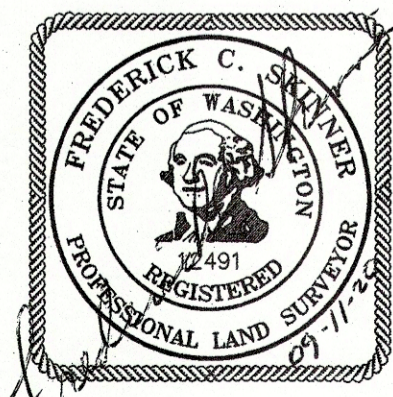
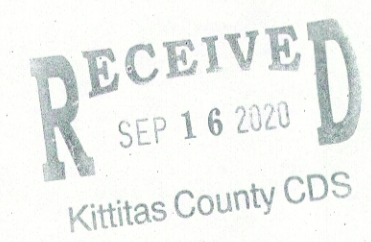
### NOTICE

This is a Major Plat and as such is not intended to show, nor does it purport to show, all easements and encumbrances.



### BASIS OF BEARINGS

The bearing for the East boundary line of the Northwest quarter of Section 27 equal Cruse & Nelson's bearing of South 00°15'36" East for the same line as shown on the FHA, U.S.D.A. property survey found under Kittitas County's Auditor File No. 199702200014



INSTRUMENT USED	INDEXING DATA
Trimble R10 GPS Receivers	
Traverse Closure Meets Standards Per WAC 332-130-090	
	S27 T18N R18E

**WESTERN PACIFIC ENGINEERING & SURVEY**  
 A TERRA DEVELOPMENT SERVICES CORPORATION  
 1328 E. Hunter Place, Moses Lake, Washington  
 T:(509)765-1023 F:(509)765-1298  
 Services in Washington and Idaho

**LCU, INC.**

Surveyed by LMH	Scale 1" = 100'
Drawn by Tml/FCS	Sheet 2 of 6
Checked by FCS	Project No. 18146

File --- Project Desc.: S:\18146\18146 DIV 4\18146 MP4.pro (Plotted - Sep 11, 2020)